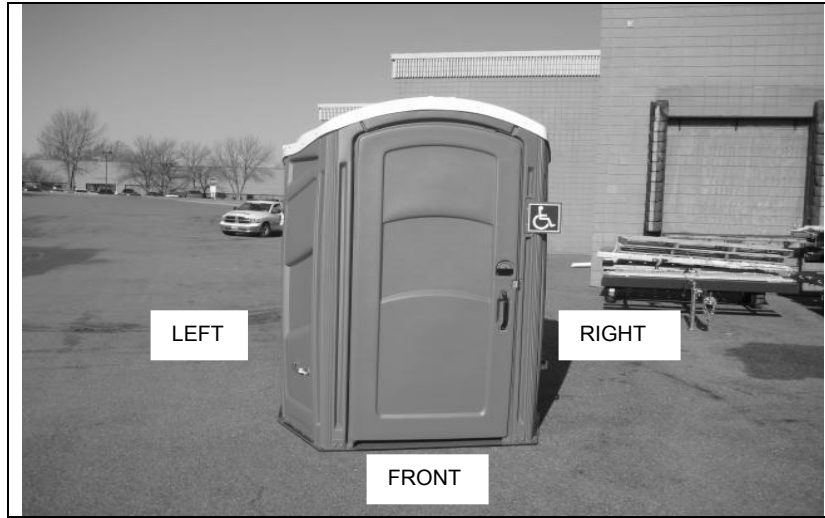


FREEDOM 3 ASSEMBLY INSTRUCTIONS

INTRODUCTION

Satellite portable restrooms must be assembled according to approved assembly procedures. Avoid variations in assembly procedures which could adversely affect product life and warranty.

All references to front, left, right, and rear are looking at the door of the unit from the outside.

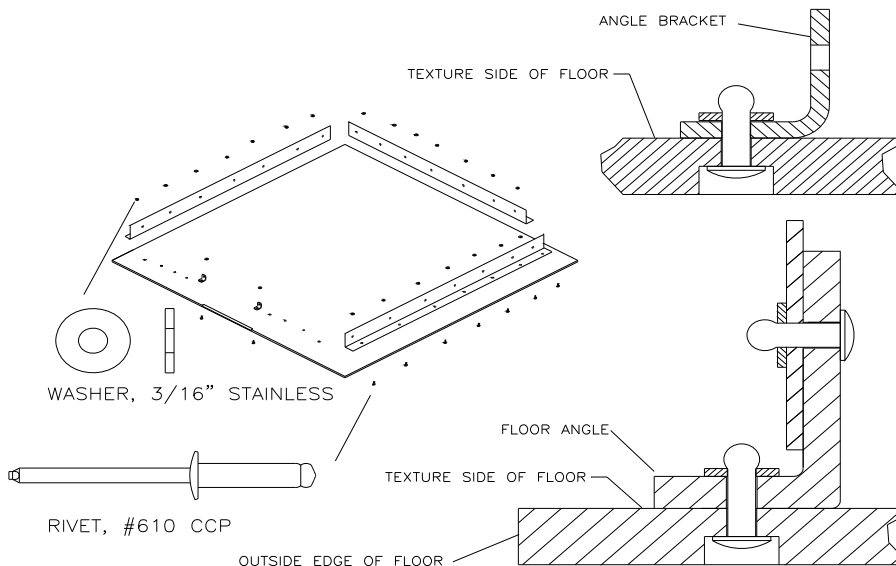


Tools:

●Standard screwdriver	●Drill Electric or Cordless Drill	●# 2 Phillips Head Driver Bit	●3/8" (.375") [9.53 mm] Hex Driver bit
●Pop Rivet Gun	●#10 (.193") [5 mm] Drill bit	●1/4" (.250") [6 mm] Drill bit	●T-30 Torx bit
●3/8" (.375") [9.53 mm] Open end wrench	●1/2" (.500") [12.2 mm] Open end wrench	●21/64" (.328") [8.3 mm] drill bit	

HELPFUL HINTS:

- Keep panels out of direct sunlight.
- Don't open up all of your kit boxes. Open up only enough kit boxes to assemble the number of toilets you are currently working on. **KEEP PARTS ORGANIZED.**
- Staging parts will minimize assembly time.
- Keep driver as upright as possible when driving lag screws for panel to tank attachment.



Install Angles on Floor:

1) Place floor P/N 21268 on a table or box with textured side up. Layout 3 long angles P/N 18039 with short flange on floor.



2) Rivet long angles to floor using rivets P/N 14351. Align holes in angles with holes in floor. Rivets from bottom of floor with washer P/N 11315 on top of angle.

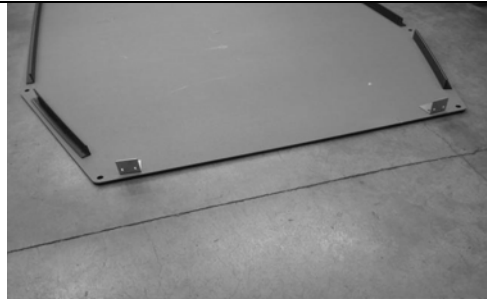


3) Rivet short angles (2) PN 21270 to left & right sides near front of floor using rivets P/N 14351 with washer P/N 11315.



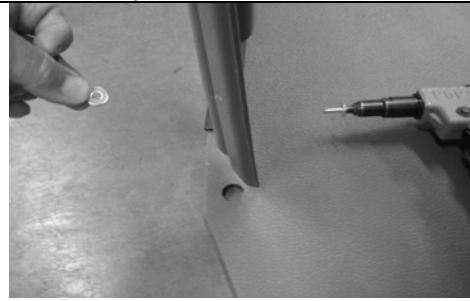
Install Front Mount Bracket on Floor:

4) Use screws (4) PN 16808 bottom of front & nuts (4) PN 13131 on top of brackets (2) PN 21271 to secure front mount brackets to front of floor. Match holes in bracket with holes in floor. Tighten screws & nuts using T-30 Torx bit & 1/2" (.500") [12.2 mm] Open end wrench.



Install Panels on Floor Angles:

5) Rivet the left / right / rear panels to long floor angles. Position panels on outside of angles so holes in bottom of panels match holes in angles. Install rivets P/N 11054 from inside unit through hole in angle and into hole in panel. Place washers P/N 11315 onto rivets outside of panel and set rivets.



6) Rivet the left / right / rear panels to long floor angles.



Rivet side Panels to rear Panel:

7) Rivet rear panel to left panel (**rear panel overlaps left side panel**). Rivet right side panel (**right side panel overlaps rear panel**) to rear panel. Use rivets P/N 11054 from outside of panel & washers P/N 11315 on the inside of panels.



Install Front:

8) Drill at dimple locations in bottom of right facing using a 21/64" (.328") [8.3 mm] drill bit. (**Tip: bend right edge of facing inward prior to installation**)



9) Position right facing behind mount bracket PN 21271 on floor. Fasten right facing to bracket using screws PN 16808 through bracket into hole drilled in facing, nuts PN 13131 on inside of facing. Tighten screw & nut using T-30 Torx bit & 1/2" (.500") [12.2 mm] open end wrench.



Install Front assembly:

10) Bend right facing, position on top of & outside of the short angle on floor. Rivet right facing to angle using rivets P/N 11054 from inside through angle & washers P/N 11315 on the outside of panel.

11) Rivet right facing to edge of right side panel (facing on outside of panel). Rivets P/N 11054 on outside of unit & washers P/N 11315 on inside of unit.

12) Repeat steps 8) through 10) to install left facing **with door / top facing**. (See **step 13) to rivet left facing to left panel with stiffener tube**).



Install Front assembly:

13) Install stiffener tube PN 21328 on outside of left panel (left facing is inside of left panel). Position stiffener tube on panel with holes in stiffener tube in line with holes in left panel / facing. Install rivets (8) P/N 18755 with washers (8) P/N 11315 on rivets from inside unit through panel / facing holes into holes in stiffener tube.

14) Rivet top facing to right facing. Measure at top in-between left & right facings (opening in facings) 33.00" [83.8 cm] (**Note: may use a clamp to hold to facing in position**) Transfer drill through 2 holes in top facing into right facing using a #10 (.193") [5 mm] Drill bit. Install rivets P/N 11054 on outside of unit & washers P/N 11315 on inside of unit. **Note: bag containing rivets & washers is taped to inside of top facing**

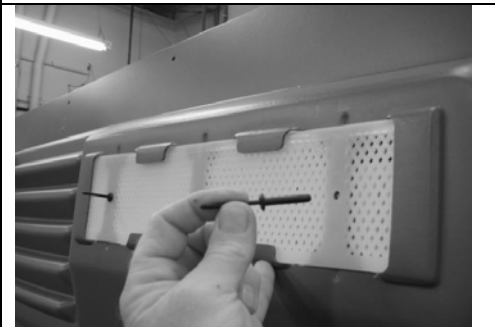
Install vent screens in panels:

15) Slide vent screen PN 14112 into pockets from the outside of unit.



Install vent screens in panels:

16) Install plastic expanding rivets PN 15337 into the 2 end holes of each screen from the inside of the unit.

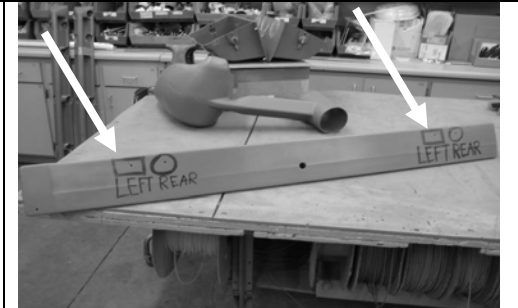
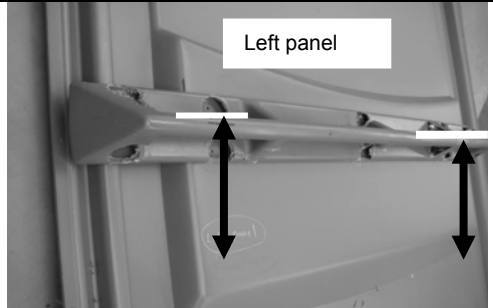


Install Handrails on Left & Rear Panels “USING TEMPLATES TO LOCATE MOUNT HOLE LOCATIONS ON PANEL”
[OLD STYLE PANELS WITH NO DRILL POINTS FOR PLASTIC HANDRAILS]:

17) Install Handrails PN 21291 (use handrail templates to mark & drill holes in panels). **(Note: left / rear handrail templates are marked at top, left / right side, and marks on round rail tube with height from floor of unit “make sure top of template is up”)** Hold **left template** 34.50” [87.6 mm] up from floor (on left panel) to marks on template handrails.

18) With left handrail template on inside of left panel align mark on left end of template with center of finger groove of left panel. Right end of template in line with edge of recess in left panel. Mark through holes in template onto left panel to locate (10) drill points in left panel. Drill at marks in panel using #10 (.193”) [5 mm] Drill bit.

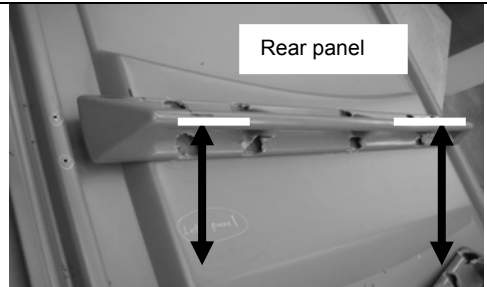
19) Rivet handrail to left panel. There are 4 pre-drilled holes on back of handrails. 2 are to mount hand rail on left panel & 2 are for mounting the handrail on the rear panel shown below. Rivet handrail to left panel with rivets through holes in left panel that match 2 holes in handrail. Use (2) PN 18755 & washers (2) PN 11361. then transfer drill through 8 remaining holes in left panel into handrail using #10 (.193”) [5 mm] Drill bit.



20) Rivet handrail to left panel with rivets (2) PN 18755 & washers (2) PN 11315 in finger groove outside of left panel. Finish riveting handrail to rear panel with rivets (6) PN 18755 & washers (6) PN 11361

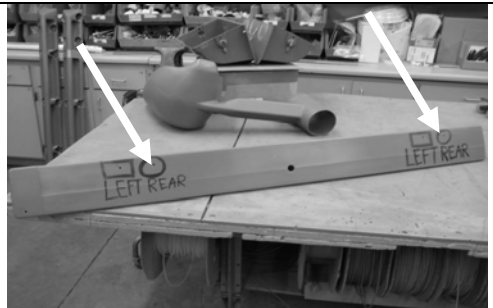
21) Hold **rear template** 34.50” [87.6 mm] up from floor (on rear panel) to marks on template handrails.

22) With rear handrail template on inside of rear panel align mark on left end of template with edge of recess of rear panel. Right end of template in line with edge of recess in rear panel. Mark through holes in template onto rear panel to locate (10) drill points in left panel. Drill at marks in panel using #10 (.193”) [5 mm] Drill bit.



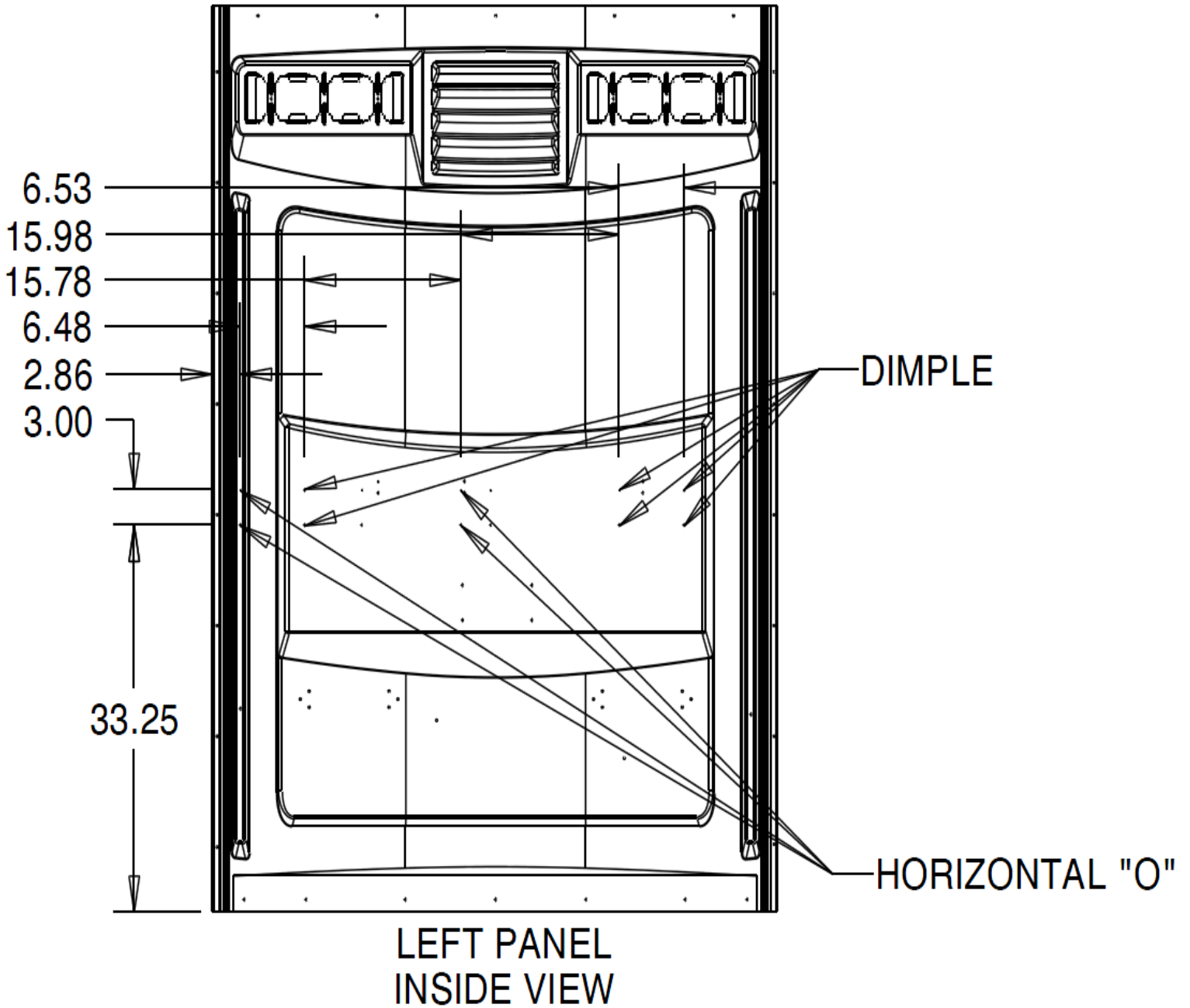
23) Rivet handrail to rear panel. Rivets through 2 holes in rear panel that match 2 holes in handrail. Use (2) PN 18755 & washers (2) PN 11361 Then transfer drill through 8 remaining holes in rear panel into handrail using #10 (.193”) [5 mm] Drill bit.

24) Finish riveting handrail to rear panel with rivets (8) PN 18755 & washers (8) PN 11361 from outside of rear panel.

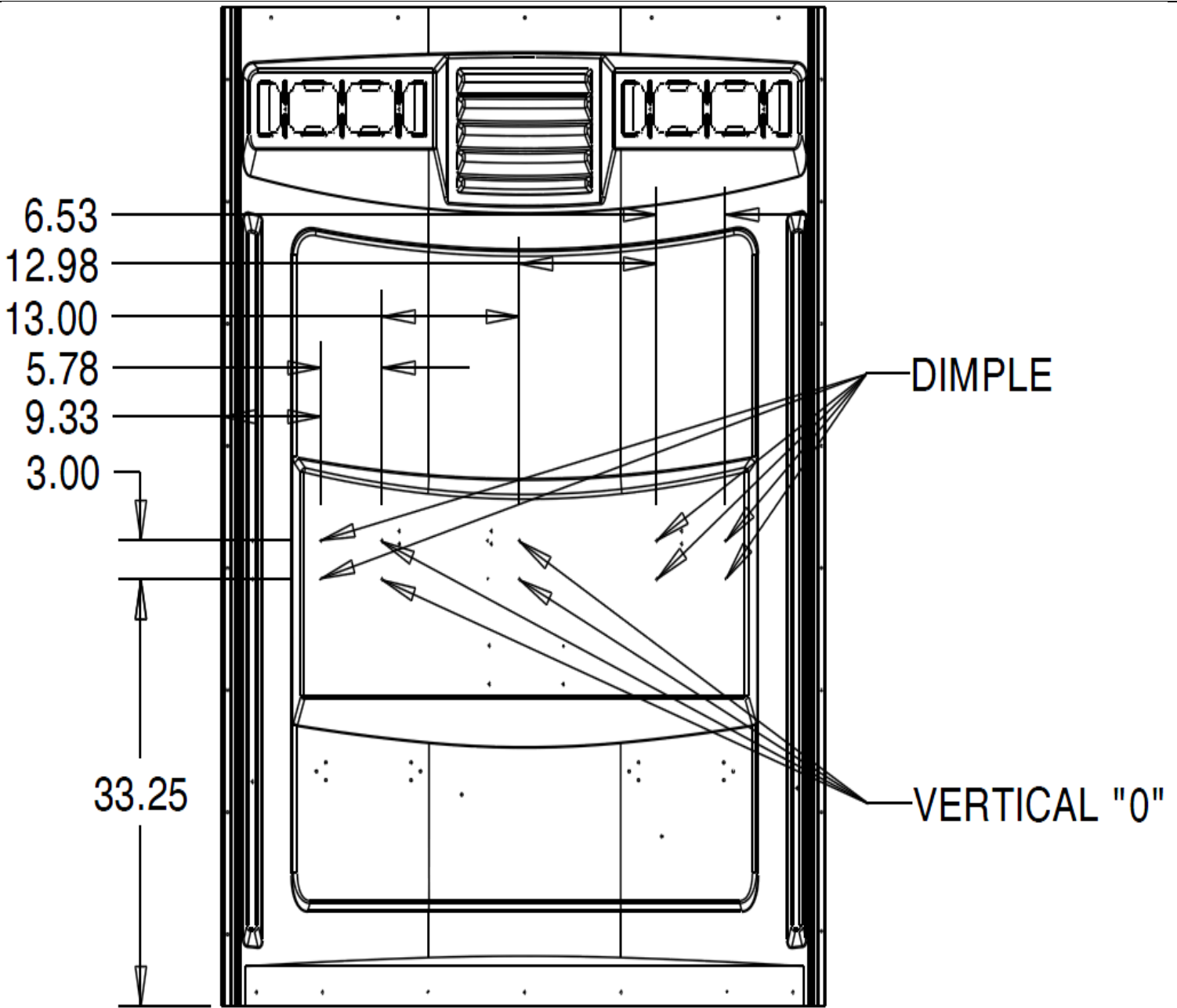


**Install Handrails Left & Rear Panels: "WITH NO TEMPLATE: MEASURE / MARK MOUNT HOLE LOCATIONS ON PANEL"
[OLD STYLE PANELS WITH NO DRILL POINTS FOR PLASTIC HANDRAILS / IGNORE EXSISTING DIMPLES]:**

25) Mark locations on left panel "OLD STYLE PANEL WITH NO DRILL POINTS FOR PLASTIC HANDRAILS" shown below. Drill at marks using #10 (.193") [5 mm] Drill bit. Rivet handrail to left panel following steps 19) & 20) **NOTE: "NEW STYLE PANEL WILL HAVE 10 DRILL POINTS FOR PLASTIC HANDRAILS AT LOCATIONS SHOWN BELOW"**



26) Mark locations on rear panel "OLD STYLE PANEL WITH NO DRILL POINTS FOR PLASTIC HANDRAILS" shown below. Drill at marks using #10 (.193") [5 mm] Drill bit. Rivet handrail to left panel following steps 23) & 24) **NOTE: "NEW STYLE PANEL WILL HAVE 10 DRILL POINTS FOR PLASTIC HANDRAILS AT LOCATIONS SHOWN BELOW"**



REAR PANEL
INSIDE VIEW

Install Tank and Vent pipe:

27) Install seat lid PN 10570 on tank PN 16538. Plastic bolt through seat lid hinge into the tank Thread plastic nut on bolt from inside of tank. Position tank in left rear corner of unit.

28) Apply pressure on tank out against panel while installing screws PN# 13860 for the outside of unit. Install screw from outside through forward dimple in left panel 15-1/2" [39.37] from the rear and 13-1/4" [33.66cm] up from floor using 3/8" (.375") [9.53 mm] Hex Driver bit.

29) Install second screw through left panel into dimple in center of groove 17.50" [44.5 cm] up from floor.

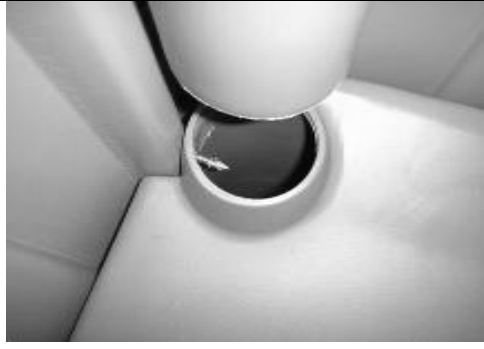


Install Tank and Vent pipe:

30) Insert vent pipe PN 13796 into tank until it bottoms out against screw.

31) Drive third screw through rear panel into dimple in groove to tank and vent pipe at 18" [45.7 cm] up from the floor.

32) Drive fourth screw through rear panel up from dimple in rear panel 1.75" [44.5 mm] up from the floor.



Install Tank and Vent pipe:

33) Drive fifth lag screw into rear panel dimple (far left dimple on rear panel for lift handle).

Install Paper guard:

34) Drill out 4 dimples in left panel just below left handrail using a drill with a 1/4" (.250") [6 mm] drill bit, at location below

35) Insert rivet PN 11054 from the outside of the panel.



Install Paper guard:

36) Install paperguard PN 17082 and washer PN 11315 on the inside. Insert the spindle PN 16844 into the paperguard. Note the position of the hook.

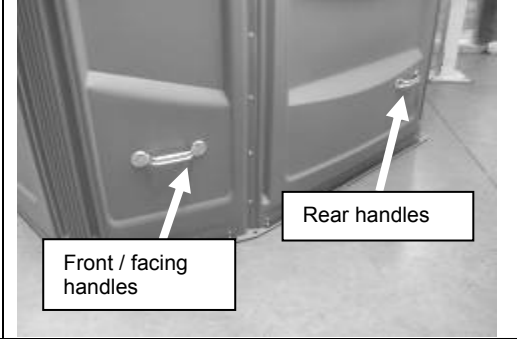


Install Lift Handles:

37) Locate 6 dimples in each side panel (left & right) for rear lift handles. Drill 1/4" (0.25) [6.35mm] holes through panels. Locate 6 dimples in each facing (left & right) for front lift handles. Drill 1/4" (0.25) [6.35mm] holes through panels.



38) Rivet handles PN 14611 to panels / facings using rivets PN 11270 through handle holes and into panels / facings. Install washer PN 11361 and washer PN 11315 on the rivet from the inside of panels / facings.

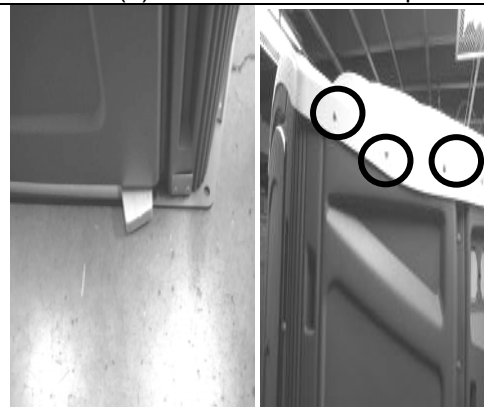


Install Roof:

39) Place roof PN 21269 on unit. Insert vent pipe in through roof. Align holes in roof with holes in sides & rear panel. Rivet roof to the sides & rear panels using rivets (15) P/N 11054 installed from outside of roof and washers (15) P/N 11315 inside on panel.



40) Rivet roof to front facings. **First place block of wood under bottom of door approximately 3.00" in height (right side).** Pull roof down transfer drilling through 3 holes in left & right side of roof into front facings. Rivet roof to facings using rivets (6) P/N 11054 installed from outside of roof and washers (6) P/N 11315 inside on panel.



41) Rivet roof to front top facing. Pull roof down transfer drill through holes in roof **(do not drill through 2nd wall of front top facing)** using #10 (.193") [5 mm] Drill bit. Rivet roof to front top facing with (4) rivets PN 14427



Install Inside Door Handle:

42) Rivet handle PN 16807 on inside of door. Drill out dimples in door using #10 (.193") [5 mm] Drill bit. Install (2) rivets PN 17436.

**Install Outside Door Handle:**

43) Rivet handle PN 16807 on outside of door. Drill out dimples in door using #10 (.193") [5 mm] Drill bit. Install (2) rivets PN 11027 outside of door with washers (2) PN 11315 on inside of door.

**Install Front Hasps:**

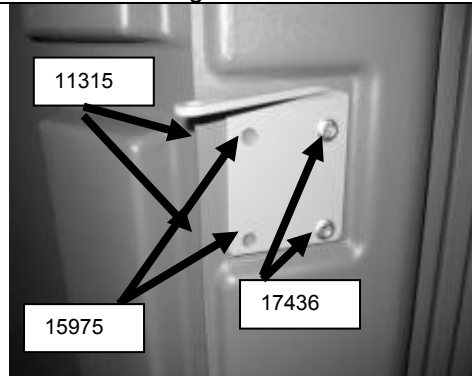
44) Locate dimples for hasp PN 13197 on door, drill at dimple locations using #10 (.193") [5 mm] Drill bit. Rivet hasp to door using (2) rivets PN 11270 outside & PN 11315 on inside of door. For hasp PN 13199 on right facing, drill at dimple locations using #10 (.193") [5 mm] Drill bit. Rivet hasp to facing using (2) rivets PN 11270 through hasp into facing & (2) washers PN 11315 on inside of facing.

**Install Door Closure / Door closure cover:**

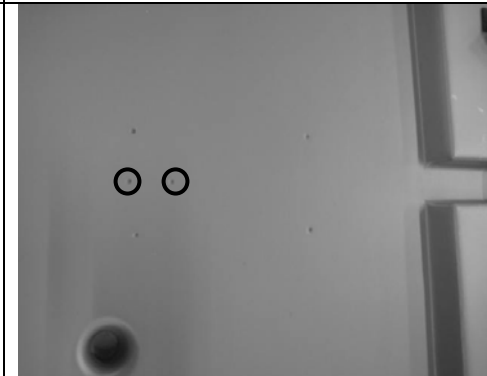
45) Drill at dimples (4) on inside of left facing (pocket for door closure bracket) using #10 (.193") [5 mm] Drill bit.



46) Place door closure bracket PN 18799 on facing inside of door as shown. Install (2) rivets PN 17436 in inside holes of bracket. Use (2) rivets PN 15975 bracket & (2) washers PN 11315 on outside of facing.



47) Drill out (2) dimples on inside of door to mount door closure bracket to door (included with door closure) using #10 (.193") [5 mm] Drill bit (**be careful not to drill through outside wall of door**).



48) Rivet door closure bracket to door (included with door closure). Install bracket using (2) rivets PN 17436



49) Fasten closure rod to bracket PN 18799. Place rod on top bracket arm. Fasten closure rod to bracket arm with screw PN 14985 and nut PN 14777 using # 2 Phillips Head Driver Bit & 3/8" (.375") [9.53 mm] Open end wrench.



50) Attach door closure to bracket on door with pin (provided with closure). **NOTE: adjust closure speed by turning cylinder (follow instructions on cylinder for direction to turn "small print"). A minimum of 10 second time frame for door to close.**



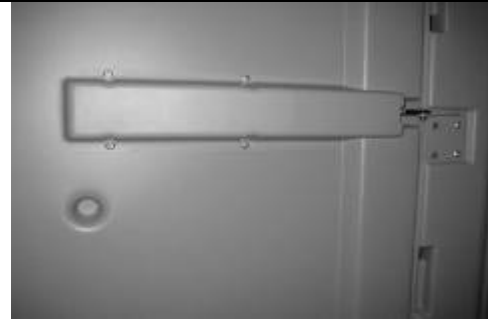
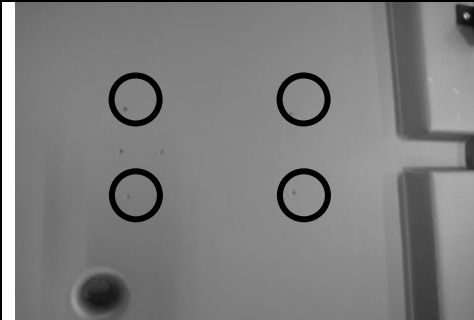
Install Door Closure / Door closure cover:

51) Drill at 4 dimple locations on inside of door using a #10 (.193") [5 mm] Drill bit (**be careful not to drill through outside wall of door**).

52) Place door closure cover PN 21314 over door closure. Attach cover to door with (4) rivets PN 17436

Install the Decal Bracket & Decal:

53) Place decal bracket PN 21308 flat side centered in recess on right facing with left edge against left edge of recess, with angled side towards rear of unit. Transfer drill through holes in front of bracket using #10 (.193") [5 mm] Drill bit. Rivet bracket to facing with (2) rivets PN 10812 on outside of unit & (2) washers PN 11315 on inside of unit.



Install the Decal Bracket & Decal:

54) Rivet rear of decal bracket (angled) to right facing. Transfer drill through holes in bracket into right facing using #10 (.193") [5 mm] Drill bit. Rivet bracket to facing with (2) rivets PN 11027 on outside of unit & (2) washers PN 11315 on inside of unit.

55) Place Decal PN 10394 on front of decal bracket as shown.

56) Install indicator plug 10161 in indicator on outside of door.

