



Recirculating Foot Flush



Recirculating Foot Flush TUFWAY

Combine effective flushing action with low maintenance and you have the new Tufway recirculating foot flush restroom from Satellite. One press of the pedal will convince you that this system has the power to clean itself after each use.

Tufway's recirculating foot flush system has superior design features that insure long life. The pump and hoses are carefully positioned under the deck to prevent damage when moving or transporting. The foot peddle is encased with a thick rubber sleeve to prevent failure caused by the collection of loose debris.

As for cleaning and maintenance, you will appreciate how simple the tank is to fill and pump. The flip top lid pops up easily and stays open with a simple rod holder. A long, full length hinge attaches the lid to the tank for added support and durability.

When you look at overall design, you'll see that the Tufway recirculating foot flush restroom is a natural upgrade to the number one restroom in the world, Tufway. For more information, visit us online or call your Area Manager.



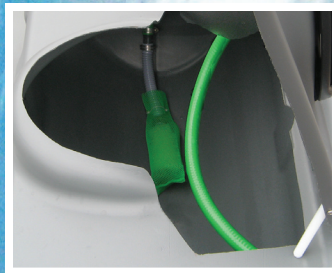
800-328-3332
www.satelliteindustries.com

FLUSHING POWER

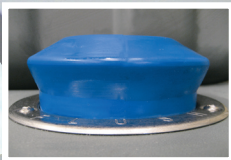
**POWERFUL SPRAY ACTION
CLEANS QUICKLY!**



LARGE TANK OPENING



**FULLY SEALED
PUMP JACKET**



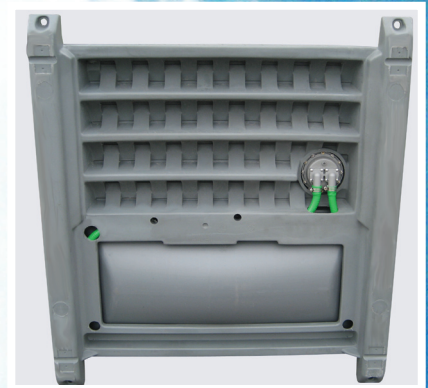
**STRONG, FULL
LENGTH HINGE**



**SIMPLE PROP-UP
MECHANISM**



**FULLY PROTECTED
PUMP, HOSES AND
FITTINGS**



PRODUCT SPECIFICATIONS		
HEIGHT	88 in.	2235 mm
WIDTH	45 in.	1143 mm
DEPTH	45 in.	1143 mm
WEIGHT	174 lbs.	78.3 kg
FLOOR SPACE	41 x 21 in.	1041 x 533 mm
DOOR OPENING	74 x 24 in.	1880 x 610 mm
SEAT HEIGHT	18.5 in.	470 mm
FLUSHING INFORMATION		
TANK CAPACITY	44 gallons	167 liters
PUMP VOLUME	7 ounces	.211 liters

* All specifications are subject to change without notice. © 2010 Satellite Ind.

Satellite

800-328-3332

www.satelliteindustries.com