

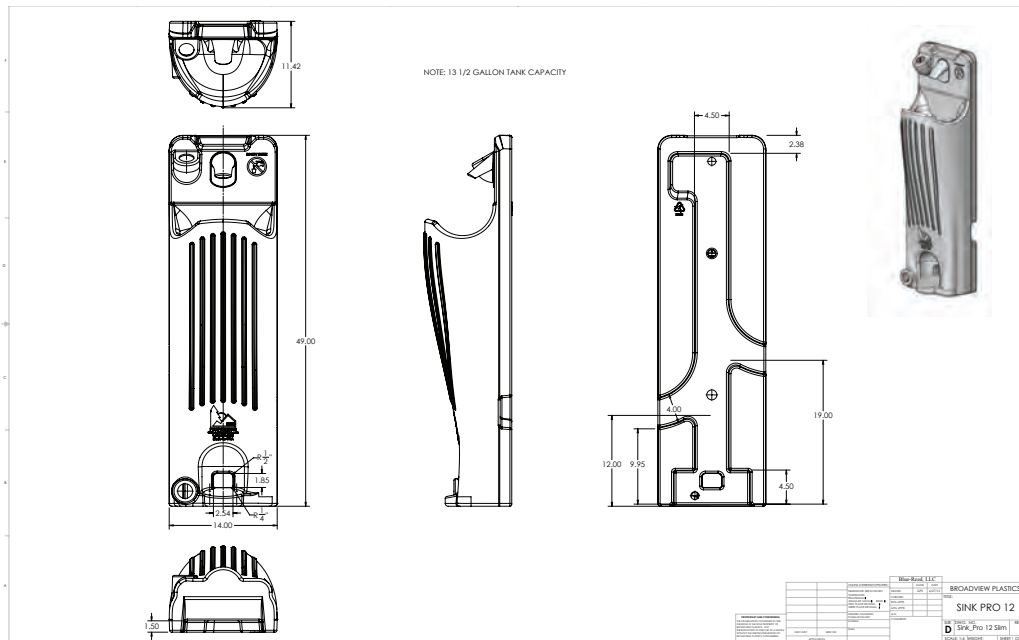


2019 parts catalog

IN-UNIT HANDWASH STATIONS (POLYPORTABLES)

PRO 12 SINK SPECIFICATIONS

HEIGHT: 39" (980MM)	LENGTH: 10.5" (270MM)
WEIGHT: 17 lbs (7.8kg)	WIDTH: 14" (360MM)



PRO 22 SINK SPECIFICATIONS

HEIGHT: 37" (930MM)	LENGTH: 13.5" (340MM)
WEIGHT: 25 lbs (11.35kg)	WIDTH: 17" (430MM)

IN-UNIT HANDWASH STATIONS (POLYPORTABLES)

REV C ITEM #	QPU	DESCRIPTION	PRICE EACH
Pro 12 Handwash Station			
8592-605-99		Pro 12 Handwash Station - Complete <small>(with hardware & decal)</small>	
1140-699	1	Sink Bracket Floor	
1937-699	2	Screw: Phillips Pan Hd 6x1/2 SS	
1124-699	1	Decal: Not For Drinking Or Cooking	
1948-699	1	Screw: 1/4-20 x 1-1/2 Phillips Pan Head SS with Lock Patch	
1940-699	1	Screw: 1/4-20 x1" PHD Pan SS	
1712-699	2	Washer: Fender 1/4 x 1 SS	
1713-699	2	Washer: 1/4" Stainless Flat	
1751-699	2	Nut: Acorn 1/4-20	
1776-699	1	Spacer: Nylon 1/2" ODx 1/4" IDx3/4 L Upper Door Closer	
Pro 22 Handwash Station			
8241-605-99		Pro 22 Handwash Station - Complete <small>(with hardware & decal)</small>	
1140-699	1	Sink Bracket Floor	
1937-699	2	Screw: Phillips Pan Hd 6x1/2 SS	
1124-699	1	Decal: Not For Drinking Or Cooking	
1948-699	1	Screw: 1/4-20 x 1-1/2 Phillips Pan Head SS with Lock Patch	
1940-699	1	Screw: 1/4-20 x1" PHD Pan SS	
1712-699	2	Washer: Fender 1/4 x 1 SS	
1713-699	2	Washer: 1/4" Stainless Flat	
1751-699	2	Nut: Acorn 1/4-20	
1776-699	1	Spacer: Nylon 1/2" ODx 1/4" IDx3/4 L Upper Door Closer	
8300-505		Pro 22 With Promount Kit	
8301-799-K	1	Promount Kit, No Sink	
1140-699	1	Sink Bracket Floor	
1937-699	2	Screw: Phillips Pan Hd 6x1/2 SS	
1124-699	1	Decal: Not For Drinking Or Cooking	
8305-505		GAP Compliant Handwash Kit w/Pro 22	
1936-699	2	Screw: 1/4-20 x .5 Phillips Pan Head SS with lock patch	
1616-699	1	Elbow, 3/4 MP x 1/2 Barbed White Nylon	
1751-699	2	Nut: Acorn 1/4-20	
1940-699	2	Screw: 1/4-20 x1" PHD Pan SS	
1713-699	2	Washer: 1/4" Stainless Flat	
1141-699	1	Sink Bracket: For sink back for Vantage installation	
1821-699	2	Rivet: Tri-clamp AL0625ATB <small>(Vantage assembly)</small>	
1138-599	1	Sink Bracket: Wall Mount for Vantage Unit	
1712-699	2	Washer: Fender 1/4 x 1 SS	
1707-699	2	Washer: 1/4" Star Zinc	
1712-699	2	Washer: Fender 1/4 x 1 SS	
1707-699	2	Washer: 1/4" Star Zinc	
1712-699	2	Washer: Fender 1/4 x 1 SS	
1707-699	2	Washer: 1/4" Star Zinc	
1751-699	2	Nut: Acorn 1/4-20	

IN-UNIT HANDWASH STATIONS CONTINUED **(POLYPORTABLES)**

REV C ITEM #	QPU	DESCRIPTION	PRICE EACH
1328-699	1	Bulk Head Fitting 3/4"	
1119-699	1	Decal: Employees Must Wash Hands Prior To Returning To Work	
1302-505	1	Backboard For Promount Kit	
8150-605	1	Towel Dispenser: Gray Injection Molded	
1038-699	1	Padlock With Key	
1033-699	1	Mirror 6" x 8" Stainless Steel	
9851-699	1	Dispenser: Spray Soap - 400 ML Bag	
9853-699	1	Refill: Anti-Bacterial Spray Soap - 400 ML Bag	
1937-699	12	Screw: Phillips Pan Hd 6x1/2 SS	
1713-699	2	Washer: 1/4" Stainless Flat	
1751-699	2	Nut: Acorn 1/4-20	
1946-699	2	Screw: 1/4-20 X 1"SS Phillips Flat Head with lock patch	
Pumps & Accessories			
1005-699		Tip Toe Pump for SuperTwin	
1008-699		Service Kit for Whale Baby Foot Pump	
1007-699		Diaphragm For Whale Baby Foot Pump - Cover Only	
1009-699		Flex Draw Latch for SuperTwin	
1028-599-99		Towel Dispenser Gray Hinge Retro Fit - Complete	
1028-699	1	Hinge, SS 9" x 1.5" x .050" Material (.125" dia pin, 1/2" curl knuckles, pierced)	
1705-699	8	Washer: Aluminum 3/16	
1806-699	8	Rivet: AB64AV	
1821-699	4	Rivet: Tri-clamp AL0625ATB (Vantage assembly)	
1101-699		Pump- Foot Pump For Handwash Station	
1122-699		Decal: Foot Pump	
1124-699		Decal: Not For Drinking Or Cooking	
1606-699		Plug: Hand Wash Station - 1.25" (no o-ring)	
1608-602		Cap - 3" Black for TagAlong / Ultra	
1613-699		Cap: 2" Fresh Water Fill Cap / ST Ultra	
1630-699		Plug: Hand Wash Station - 1.25" (with o-ring)	
1606-699	1	Plug: Hand Wash Station - 1.25" (no o-ring)	
1631-699	1	O-Ring (for 1.25 inch plug)	
8005-603		Trash Can: Blue for Supertwin	
8012-605		Hands Free Basin Assembly 7'	
8019-505		36" Hands Free Ag Basin Assembly	
8150-605		Towel Dispenser: Gray Injection Molded	
8151-600		Towel Dispenser: White / TagAlong	
8152-699		Single-Fold Towel (Natural) - 4,000 / Case	
8153-600-99H		Towel Dispenser: White-Jumbo Complete (Handwash Station Installation)	
8153-600	1	Towel Dispenser: White - Jumbo	
1808-699	3	Rivet: 688 Tri-Bulb (coat hook, mirror, slide latch bracket)	

IN-UNIT HANDWASH STATIONS CONTINUED **(POLYPORTABLES)**

REV C ITEM #	QPU	DESCRIPTION	PRICE EACH
1302-505		Backboard For Promount Kit	
8024-599		Plug Wrench Sink	
1339-699		Nylon Loop Clamp 5/8" Outside Diameter, White	
8301-799-K		Promount Kit, No Sink	
1302-505	1	Backboard For Promount Kit	
8150-605	1	Towel Dispenser: Gray Injection Molded	
1038-699	1	Padlock With Key	
1033-699	1	Mirror 6" x 8" Stainless Steel	
9851-699	1	Dispenser: Spray Soap - 400 ML Bag	
9852-699	1	Refill: Lotion Spray Soap - 400 ML Bag	
1937-699	12	Screw: Phillips Pan Hd 6x1/2 SS	
1713-699	4	Washer: 1/4" Stainless Flat	
1947-699	2	Screw: Phillips Head 1/4-20 x 1.25 SS	
1751-699	4	Nut: Acorn 1/4-20	
1946-699	2	Screw: 1/4-20 X 1"SS Phillips Flat Head with lock patch	

Can't Sleep?

Shop Online and Save 5%



satelliteindustries.com



Regional Managers & Territories



Northwest

John Sprenger

763-519-6544

johns@satelliteindustries.com



Northeast

Josh Carmichael

574-350-2162

joshuac@satelliteindustries.com



South Central

Matt McClure

763-519-6521

mmclure@satelliteindustries.com



Southwest

Tim White

763-519-6543

timw@satelliteindustries.com



Southeast

Gordy Hunt

763-519-6520

ghunt@satelliteindustries.com



Texas

Ryan Foley

763-519-6526

ryanf@satelliteindustries.com



West

Bryan Lowe

763-519-6540

blowe@satelliteindustries.com



North Central

Mark Elhardt

763-551-7230

marke@satelliteindustries.com



Québec

Adrian Tummel

+32/2-542-56-55

adriant@satelliteindustries.com



Mountain

Jeff Sprenger

763-519-6527

jsprenger@satelliteindustries.com



Great Lakes

Paul Jongert

763-519-6546

paulj@satelliteindustries.com

Strategic Account Manager

Ryan Anthony

763-519-6548

ryana@satelliteindustries.com

Online Ordering

satelliteindustries.com | safetfresh.com

Customer Service

Restrooms: 800-883-1123 | Fax: 800-328-3334
Safe-T-Fresh: 877-764-7297 | information@satelliteindustries.com